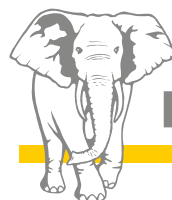
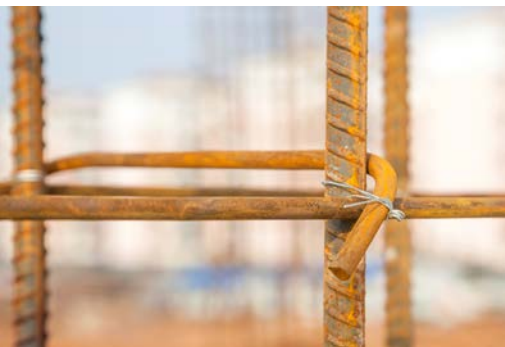


MXR 32-4 stationary boom

The lightweight boom, optimised for crane use



Putzmeister

Honed to the optimum design

The MXR 32-4 – easy to transport, hard to beat

The new MXR 32-4 stationary boom from Putzmeister combines old strengths with new innovations. The result provides you with increased flexibility and user-friendliness and reduced operating costs. One example is the new hinge design: Thanks to intelligent technology, the boom can be assembled even faster and easily relocated. Its remarkably low weight also makes it extremely versatile. The heaviest part of the placing boom weighs less than 5 000 kg. Therefore it can be lifted by the crane without any problems and assembled at any location in no time. The maximised vertical reach or depth of reach provides even more room to work in, especially thanks to the -10° negative angle of inclination of the first arm. Even for typical applications of our stationary booms, such as building dams, liquid gas tanks (LNG), bridges, in caverns and in a wide range of high-rise construction projects, this often enables you to gain crucial meters.

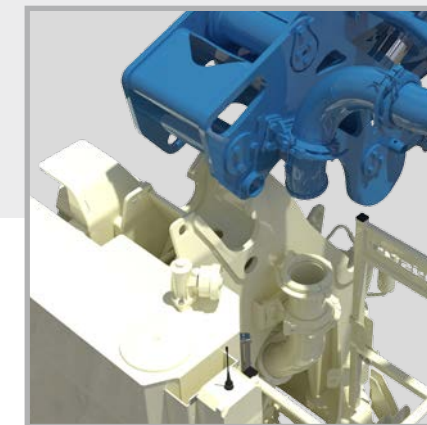
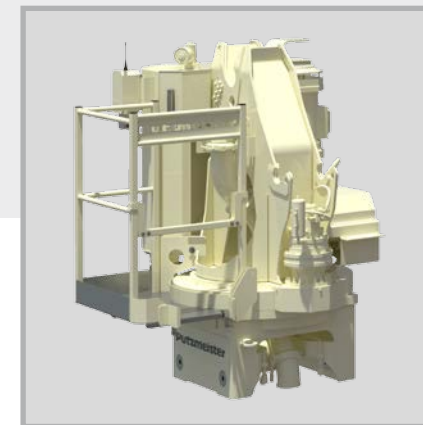


Inspired hinge technology – mount, insert, pour

We rely on newly designed, consistently implemented hinge technology. This quick release system ensures that the MXR 32-4 can be assembled quickly and extremely easily. The placing boom can be removed from the boom pedestal even more easily and assembled or dismantled as a unit. This offers you more space to work in on the construction site and provides considerable time savings during assembly. Firstly, the placing boom can be transported to the boom pedestal using a crane without any problems and mounted. Secondly, it can be secured with only a few simple movements and is then immediately fully operational.

Consistently compact – everything revolves around the new boom pedestal

Our engineers have not only completely optimised the placing boom, but also the boom pedestal of the MXR 32-4. It has a powerful planetary gearing which stands out thanks to its compact design, among other features. All the components of the slewing head – even the electric control cabinet and the hydraulic fluid reservoir – rotate and are always in the machine operator's range of vision. This means that fixed obstacles in the working area on the platform cannot become hazards. The drive performance is also remarkable, especially in terms of efficiency and environmental friendliness. A 60 % reduction in oil volume speaks for itself.

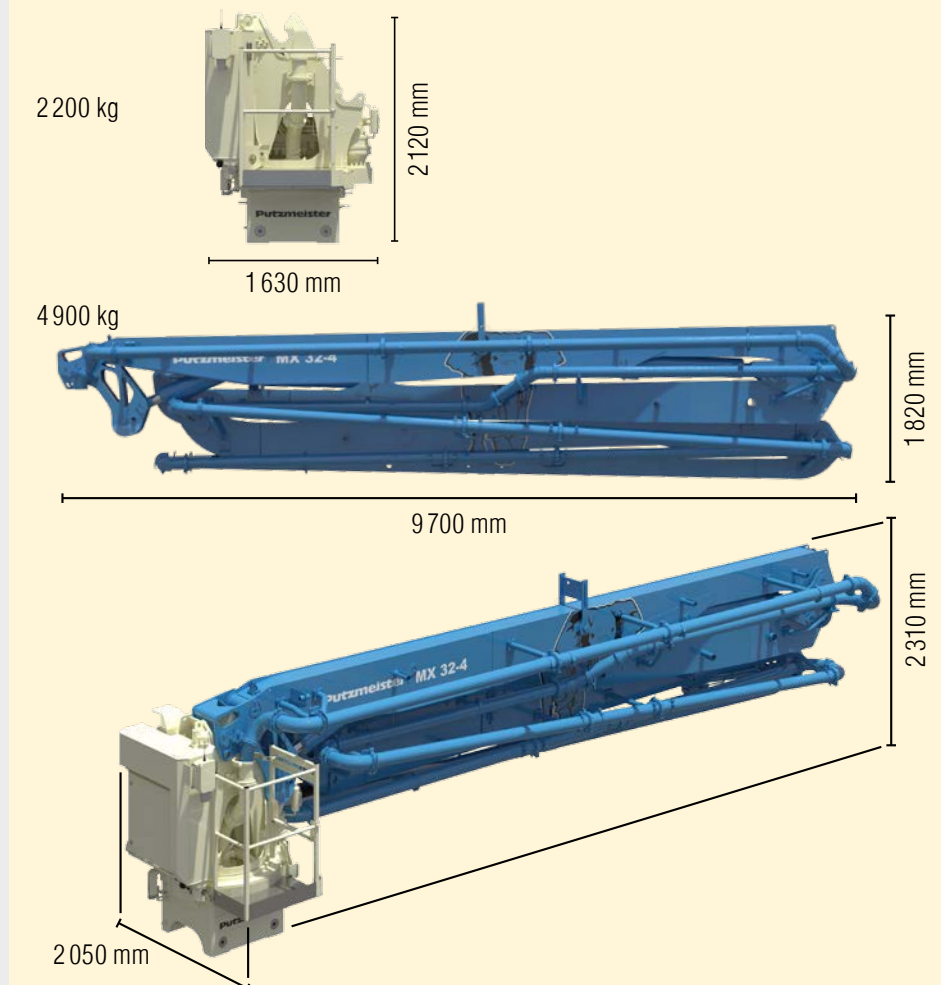


Pleasant workplace – the platform with brains

Here, everything has its place – especially the machine operator. The large working platform provides sufficient room for service work and for assembling the slewing head and the placing boom. The good accessibility to all components enables you to work safely, comfortably and efficiently. In addition, the platform is designed so that the placing boom can rotate by 360°, even with a negative inclination angle of -10°.

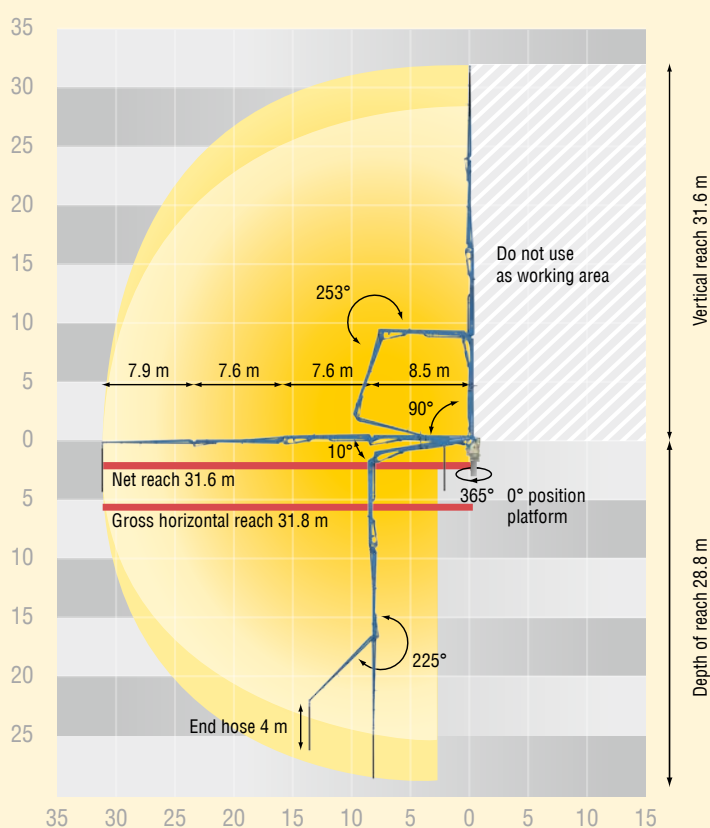
Lighter loads – thought out down to the smallest detail for the bigger picture

The MXR 32-4 is divided into practical, compact units. The new, significantly lighter design is also noticeable during transport. For example, the weight of the heaviest part of the placing boom is below the magical 5000 kg limit. This means: Lifting with a crane without a disconnection point on the placing boom, easier handling and shorter assembly and dismantling times. In order to minimise costs for service and maintenance, we only use low-wear standard delivery line elements which can be replaced easily.



The key benefits at a glance

- **Easy transport** thanks to the low weight of the heaviest part of the placing boom below 5 t
- The new quick release system with hinge technology enables a **quick and simple assembly** of the placing boom
- **Increased horizontal reach/depth of reach**, especially due to the -10° inclination angle of the first arm
- **Good accessibility and plenty of space for assembly** thanks to the new working platform
- **Environmentally friendly** because of reduced oil volume
- **More efficient drive** thanks to planetary gearing
- **Flexible Z folding** with the Putzmeister delivery line DN 125/5.5"
- **Secure operation of the boom** thanks to the compact slewing head without stationary parts
- The use of low-maintenance standard components lead to **lower service costs**
- **Suitable for the RS 850 tubular column system** from Putzmeister



Technical data

System	Tubular column (RS)
Delivery line	SK 125/5.5"
Arms	4
Fold system	Z
Reach	
Horizontal	31.8 m
Vertical	31.6 m
Depth of reach	28.8 m
Weight	
Placing boom	4 900 kg
Pedestal	2 200 kg



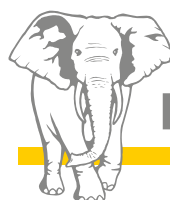
Putzmeister Concrete Pumps GmbH

Max-Eyth-Straße 10 · 72631 Aichtal

P.O.Box 2152 · 72629 Aichtal

Tel. +49 (7127) 599-0 · Fax +49 (7127) 599-520

pmw@pmw.de · www.putzmeister.com



Putzmeister